

# Directions are on the BIOPURE containers



15+ YEARS OF DEVELOPMENT AND TESTING!

## What is Bio-Pure?

- 24/7 Proprietary Microbial Cleaning Action
- Dual Bacteria and Enzyme Action Breaks Down and Digests Organic Waste
- One microbe becomes 9 - 10 million waste digesting microbes in 8 hours.
- Only suction line cleaner that guarantees improved suction performance
- Mixture of All Natural Bacteria (multi-species), Carriers, Nutrients, and Flow Agents, & Specialized Enzymes
- Specialized Bio-Pure bacteria will continue to double in number every hour to digest organic waste
  - Primary bacteria digest raw waste
  - Secondary and tertiary bacteria digest remaining substrates
- No Useless Fill
- Saves dental teams time and money



# 800-240-5677

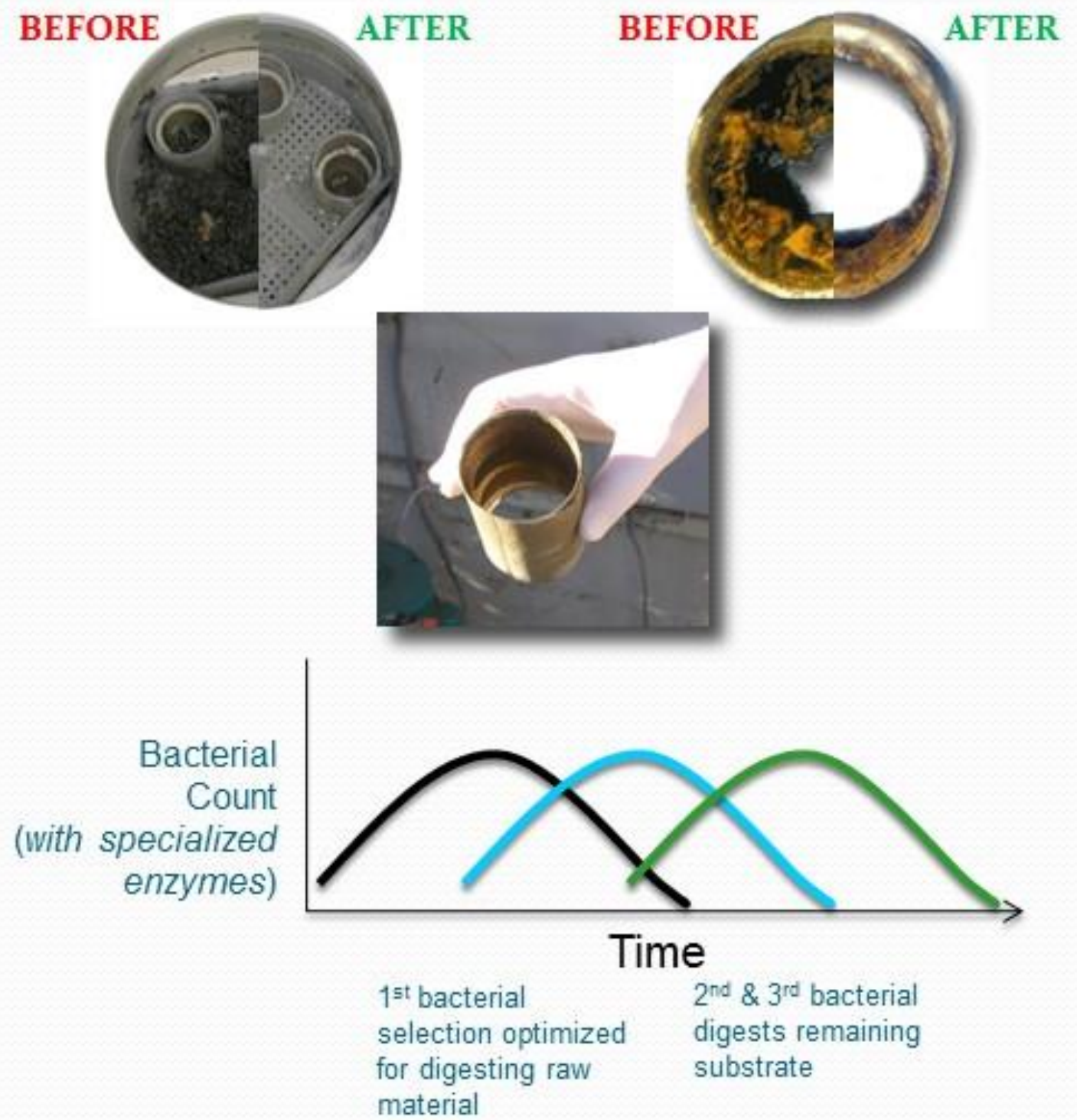


BIO-PURE  
ELIMINATES  
THE NEED  
FOR DAILY  
TRAP  
CLEANING.  
SIMPLY DUMP  
TRAPS ONCE  
OR TWICE  
MONTHLY!



## What Separates Bio-Pure from the Competition?

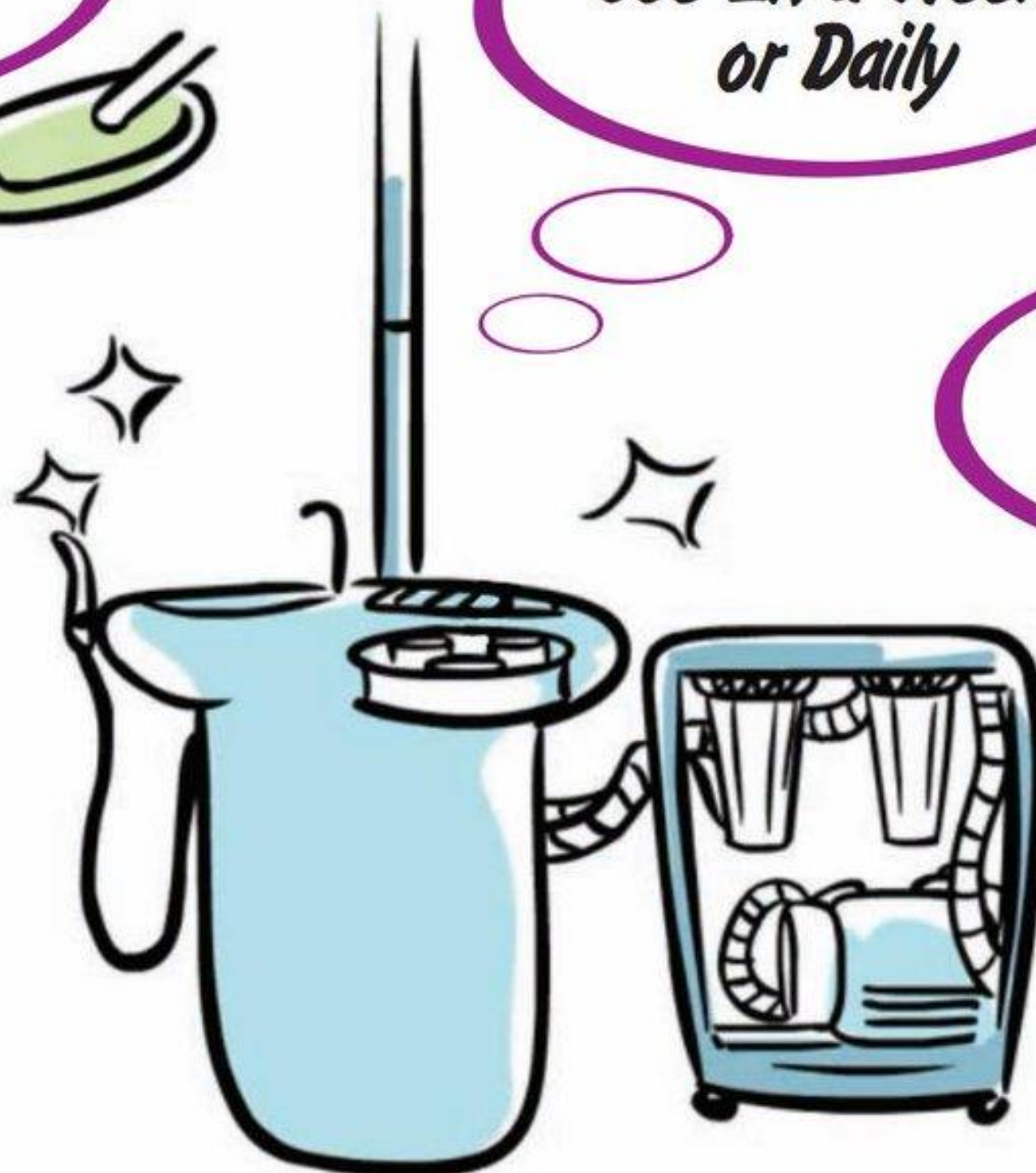
- Use only 2x per week vs. daily
- Proprietary mixture of enzymes and bacteria vs. chemical and enzyme mixtures
- Clean Op eVac Traps 4x less often
- 100% Safe and All-Natural



*Eliminates the Need to Clean Traps Daily*

*Use 2x a Week or Daily*

*Natural & Non-Foaming*





15+ YEARS OF DEVELOPMENT AND TESTING!

# Bio-Pure Feature and Benefits

- **Simple-to-Use**
  - Use only 2x per week
- **Cleans Between Uses**
  - 24/7
- **Eliminate Trap Hand Cleaning**
  - Clean traps 4x less often
- **Removes Odors and Sludge**
  - Eradicates Prophy Paste Buildup
  - Eliminates Slogging Down During a Busy Day
- **Non-Corrosive Neutral pH**
  - No effect on Chair tubing or vacuum lines
  - No impact on Amalgam collectors' efficacy
  - ADA & EPA - Amalgam Compliant
- **Endorsed by +12 Equipment Manufacturers**
- **Non-Foaming**
  - Works well with wet ring and dry vac systems
- **100% All Natural & Safe**
  - No concerns to patients, staff or downstream
- **More cost effective**
  - Weekly Cost = \$1.45 Per Operator
  - UCLA saved \$1500 monthly
- **Simplifies service tech calls**
  - Less clogs
  - No degradation of Op tubing or vac lines
  - Easier to check and service amalgam filters
- **OEM Specified Part for 10+ Equip. Manufacturers**
- **Satisfaction Guaranteed!!!**



15+ YEARS OF DEVELOPMENT AND TESTING!

# The Dental Advisor Editor's Choice & Green Product of the Year Awards



**Editors' Choice**  
THE DENTAL ADVISOR  
www.dentaladvisor.com

**Bio-Pure Evacuation System "Restore"**

**Description**  
Bio-Pure evacuation system treatment is designed with a proprietary microbial formula to restore vacuum line suction to full pump capacity and eliminate daily trap cleaning. Bio-Pure has a neutral pH and is safe for all pump equipment including amalgam separators. The microbial formulation is 100% all natural ingredients and continues to clean between uses. The system includes two components: Bio-Pure Complete Evacuation System Restorative and Bio-Pure Complete Evacuation System Cleaner. Bio-Pure Restorative is intended to be used over 3 weeks to "Restore" vacuum suction by removing all the accumulated biofilm build-up. After this initial treatment, Bio-Pure Cleaner should be used regularly to maintain clean lines. Both components are supplied as powders that must be mixed with water. Bio-Pure was used by 25 consultants in 427 sites. It received an 89% clinical rating.

**Product Features**  
Bio-Pure provided very good effectiveness in cleaning evacuation lines, and this was the highest rated feature. Seventy percent of consultants said that it eliminated the need for daily cleaning of traps. Sludge from blood, tissue and prophy paste was greatly reduced. On a routine basis, the product was not as easy to use as liquids or other forms that dissolve more readily. Fifty-seven percent of consultants found Bio-Pure to be better than other evacuation line cleaners they had used and 33% found it to be equivalent. Seventy-eight percent of consultants would switch to Bio-Pure and 87% would recommend it to a colleague.

**Results From Six Offices**  
In six of the offices in which the Bio-Pure system was evaluated, pre-treatment and post-treatment suction times were compared. The time required to suction 12 ounces of Bio-Pure is a significant quantity was recorded before the initial treatment. After use of Bio-Pure to flush and maintain the system, suction times were recorded. Data were recorded in the same operation. Overall, an average of 23% improvement in suction time was found.

Office #	Improvement in suction time
1	41.0%
2	3.0%
3	17.0%
4	42.0%
5	16.0%
6	12.0%

**Consultants' Comments**  
"A noticeable improvement in the quality of our suction."  
"The initial treatment removed a lot of debris."  
"I do not have to clean the traps daily anymore."  
"I prefer this type of all-natural product over chemical cleaners."  
"Excellent value."  
"I would like a pre-mixed solution, tablet or unit-dose packets rather than just powder that has to be mixed."  
"Provides clear directions and more distinctive names for color differentiation between the products."  
"Includes a sturdy bottle for mixing."

**Suggested Retail Cost**

6 oz. "Restore" 8 oz for 3 weeks	\$45.00
14 oz. Maintain 8 oz for 1 week	\$79.00
48 oz. Maintain 8 oz for 4 1/2 weeks	\$226.40

**Clinical Tips**  
• Bio-Pure Complete Evacuation System Restorative is a "good" and not a "bad" like all other products. Treat this system at a time when the office will not be in use the next day.  
• Do not store in direct sunlight or in a cold storage container.  
• Powder dissolves better in warm water.

14 DENTEL ADVISOR 3110 West Liberty, Ann Arbor, Michigan 48103 (800) 347-6388 info@dentaladvisor.com © 2012 Dental Consultants, Inc.

## CLINICAL EVALUATION RESULTS

- **92%** found Bio-Pure to be **equivalent or better** than their existing eVac cleaner.
- **78%** are **switching** to Bio-Pure.
- **87%** would **recommend** it to colleagues.
- Offices that performed pre/post suction performance testing, an average **23% improvement** in suction time was found.

## CONSULTANT COMMENTS

- "A noticeable improvement in the quality of our suction."
- "The initial treatment removed a lot of debris."
- "I do not have to clean the traps daily anymore."
- "I prefer this type of all-natural product over chemical cleaners."



15+ YEARS OF DEVELOPMENT AND TESTING!

# Frequently Asked Questions

## How does Bio-Pure clean between uses?

- Proprietary bacteria formula colonizes entire evacuation system.
- <8 hours 1 cell → 17 million cells
- Growth continues for ~10 days
- Continues to clean 24/7 between uses

## How does Bio-Pure remove odors?

- Trap and line odors are caused by hydrogen sulfide, sulfur and ammonia.
- Bio-Pure breaks down & digests the solids where sulfur-producing bacteria normally thrive, eliminating the odors.

## Is Bio-Pure safe for use on systems equipped with amalgam separators?

- Yes.
- Non-corrosive Neutral pH

## Is Bio-Pure safe for use on dry-vacuum pump systems?

- Yes, it is non-foaming

## How does Bio-Pure compare to other evacuation products?

- More effective
- More economical
- Benefits an evacuation system in more ways than all other solutions

## Is Bio-Pure EPA registered?

- No. Contains only naturally occurring, non-pathogenic, indigenous microorganisms that are not regulated by the FIRFA Act.



15+ YEARS OF DEVELOPMENT AND TESTING!

# Frequently Asked Questions

## How is Bio-Pure used?

- Mix with warm water
- Aspirated into HVE and SE lines

## How many operatories will a 6oz., 14oz., or 48oz. jar clean?

6 oz.	Cleans 4 Ops	4 weeks
14 oz.	Cleans 4 Ops	10 weeks
48 oz.	Cleans 4 Ops	9 months

## Is Bio-Pure safe to use?

- Yes
- 100% all natural & safe for humans, animals and plants
- No harmful ingredients of any kind!

## What can be expected after first few applications?

- Week 1                      Sludge and debris may accumulate in the traps.
- Week 4.                      Traps will no longer require cleaning by hand weekly

## Why is there increased trap sludge when Bio-Pure is first used?

- Years of trapped accumulation left behind by other cleaners
- Shows the process of cleaning out line inner surfaces and restoring vacuum suction has begun.

## How does Bio-Pure restore vacuum line suction & eliminate trap hand cleaning?

- Bio-Pure breaks down & digests organic waste throughout the entire evacuation system.
- Clean traps 4x less often (~1/mth)



15+ YEARS OF DEVELOPMENT AND TESTING!

# Frequently Asked Questions

**How long has Bio-Pure been used in the dental field?**

- Bio-Pure has been restoring evacuation systems worldwide for 7+ years.

**Does Bio-Pure contain fillers?**

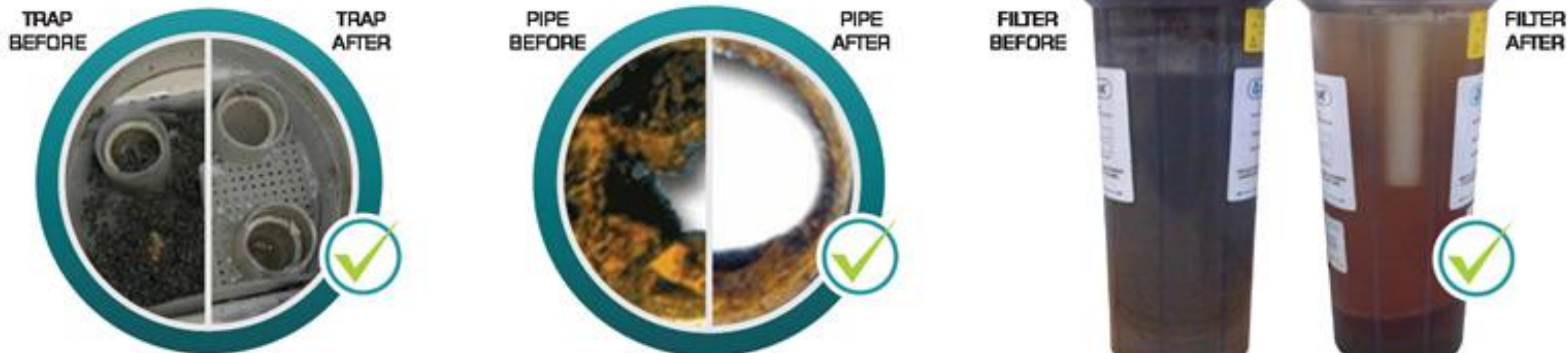
- No. While many products contain 90% or more fillers, Bio-Pure contains absolutely none!

**Can Bio-Pure be used in other areas of the office?**

- Yes, Bio-Pure can be used in any area where organic waste management and odor control is needed!

**What is the shelf-life of Bio-Pure?**

- 2 years



**800-240-5677**

[Matthew@Dentalvacuums.com](mailto:Matthew@Dentalvacuums.com)